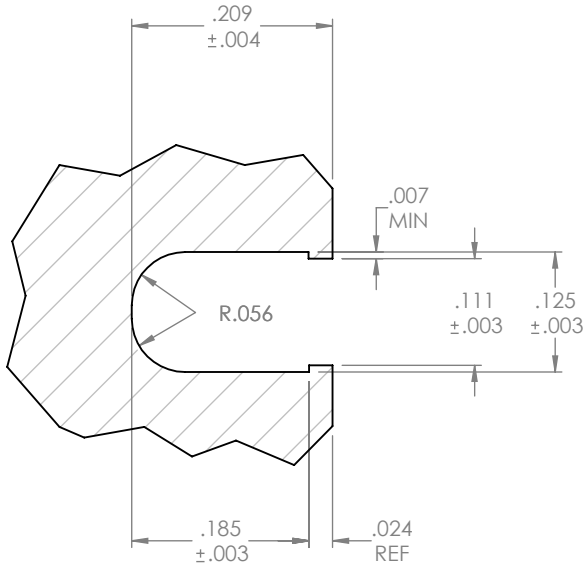


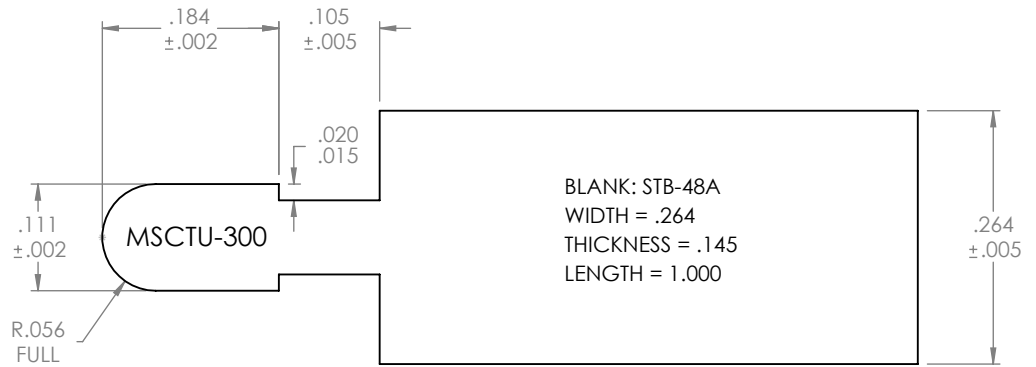
| APPLICATION CONDITIONS | MIN. | NOM. | MAX. |
|------------------------|------|------|------|
| TEMPERATURE (°F) | | | |
| PRESSURE (PSI) | | | |
| SPEED (SFPS) | | | |
| STROKE LENGTH (IN) | | | |
| CYCLE RATE (CYL/SEC) | | | |
| MEDIA | | | |

| BILL OF MATERIALS | | | | |
|-------------------|-----|-------|----------|-------------|
| ITEM | QTY | PART# | MATERIAL | DESCRIPTION |
| | | | | |
| | | | | |
| | | | | |
| | | | | |
| | | | | |
| | | | | |

| REVISIONS | | | | |
|-----------|------|-------------|------|-------|
| ZONE | REV. | DESCRIPTION | DATE | ECN # |
| | | | | |
| | | | | |



300U GROOVE



PROPRIETARY AND CONFIDENTIAL
 THE INFORMATION CONTAINED IN THIS DRAWING IS THE SOLE PROPERTY OF MW INDUSTRIES, INC. ANY REPRODUCTION IN PART OR AS A WHOLE WITHOUT THE WRITTEN PERMISSION OF MW INDUSTRIES, INC IS PROHIBITED.

| | | |
|-----------------------------|------------------|---------|
| UNLESS OTHERWISE SPECIFIED: | NAME | DATE |
| DIMENSIONS ARE IN INCHES | DRAWN L. DOUGLAS | 5/27/20 |
| TOLERANCES: | MFG REVIEW | |
| FRACTIONAL ± 1/16" | ENG APPR. | 5/27/20 |
| ANGULAR: ± .5° | | |
| TWO PLACE DECIMAL ±.01 | | |
| THREE PLACE DECIMAL ±.005 | | |
| JACKET MATERIAL: | COMMENTS: | |
| SPRING TYPE: 300 U-SPRING | | |
| O-RING: | | |
| DO NOT SCALE DRAWING | | |



| | | |
|--|-----------------------|--------------|
| TITLE: GENERAL ARRANGEMENT 300 U-SPRING GROOVE AND TOOL | | |
| SIZE A | DWG. NO. MSCTU-300 | REV |
| SCALE: NTS | | SHEET 1 OF 1 |

5

4

3

2

1