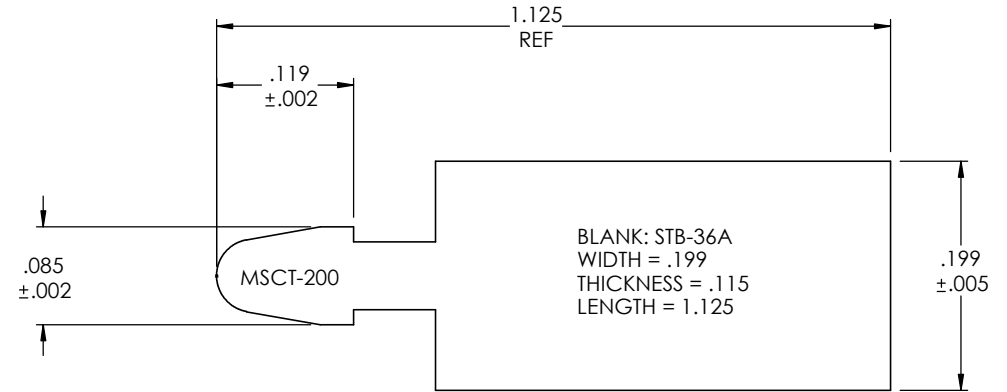
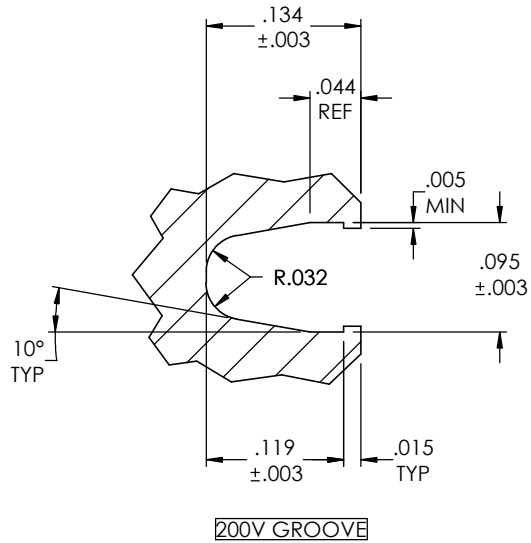


APPLICATION CONDITIONS	MIN.	NOM.	MAX.
TEMPERATURE (°F)			
PRESSURE (PSI)			
SPEED (SFPS)			
STROKE LENGTH (IN)			
CYCLE RATE (CYL/SEC)			
MEDIA			

BILL OF MATERIALS				
ITEM	QTY	PART#	MATERIAL	DESCRIPTION

REVISIONS				
ZONE	REV.	DESCRIPTION	DATE	ECN #



-----⌀

**PROPRIETARY AND CONFIDENTIAL**  
THE INFORMATION CONTAINED IN THIS DRAWING IS THE SOLE PROPERTY OF MW INDUSTRIES, INC. ANY REPRODUCTION IN PART OR AS A WHOLE WITHOUT THE WRITTEN PERMISSION OF MW INDUSTRIES, INC IS PROHIBITED.

UNLESS OTHERWISE SPECIFIED:  
DIMENSIONS ARE IN INCHES  
TOLERANCES:  
FRACTIONAL ± 1/16"  
ANGULAR: ± .5°  
TWO PLACE DECIMAL ±.01  
THREE PLACE DECIMAL ±.005

JACKET MATERIAL:  
SPRING TYPE: 200 V-SPRING  
O-RING:  
DO NOT SCALE DRAWING

	NAME	DATE
DRAWN	L. DOUGLAS	2/14/18
MFG REVIEW		
ENG APPR.		2/14/18

COMMENTS:

MW Industries, Inc.

TITLE:  
**GENERAL ARRANGEMENT  
200 V-SPRING  
GROOVE AND TOOL**

SIZE <b>A</b>	DWG. NO. MSCT-200_web	REV
SCALE: NTS		SHEET 1 OF 1